

36LEDs high power lens with narrow beam 15° for Stadium lighting

Model:	AJHB180D36LED15G
Size:	178.71x178.71(mm)
Height:	13.74mm
Beam Angle:	15°
Material:	PC
Transmittance:	>90%
LED Type:	3535LED

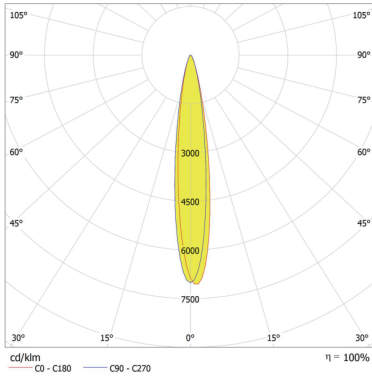


FEATURES

1. High Power lens module for Stadium lighting and Floodlight, with completely optical beam angles 10°, 15°, 30°, 45°, 60°, 90°.
2. This 36LEDs lens is a perfect solution for the lighting systems of stadiums, multi-sports courts, courtyards, terraces, facades, parking lots, tunnels, squares, transport terminals, ports, airports and sports fields.



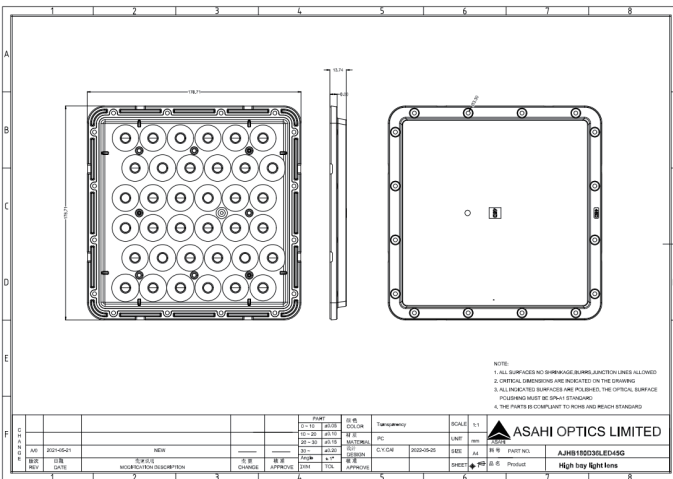
LENS LIGHT DISTRIBUTION & APPLICATION



15°



LENS DRAWING



LED TYPE



3535LED



3535LED

LED BRAND

