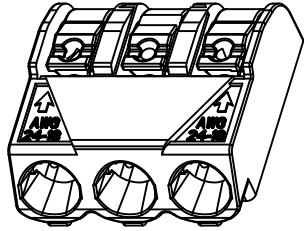
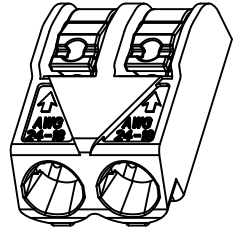
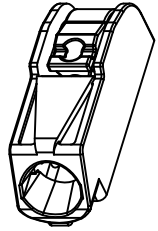
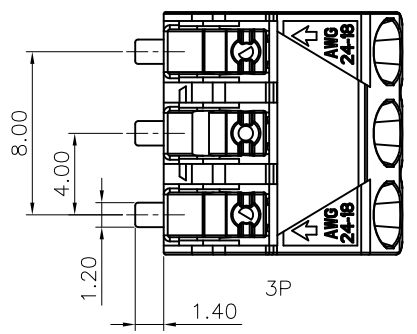


REV.	DESCRIPTION	DRAWN	CHECKED	APPROVED
A	NEW RELEASE	YCH 06/20/12'		

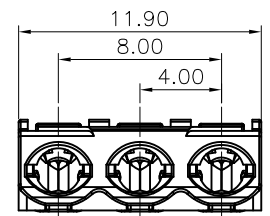
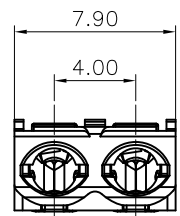
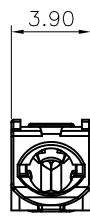
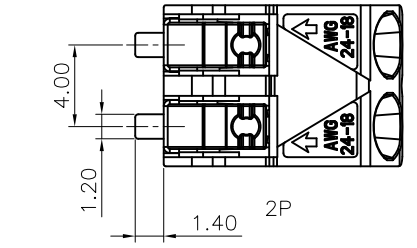
- NOTES:**
- Materials:**
 - Insulator: High Temperature ,UL94 V-0 Rated, RoHS,REACH compliance.
 - Contact: Copper Alloy, Plating Matt Tin .
 - Specifications:**
 - Temperature Range: -40~+105°C.
 - Contact Resistance: 20mΩ maximum.
 - Insulation Resistance: 1000MΩ minimum.
 - Voltage Rating: 320V AC/DC.
 - Current Rating: 9A max per pin.
 - Application wire range:
 - single solid wire: 0.2-0.75mm².
 - stranded type wire: 24-18AWG.
 - Resistance to soldering heat: 260°C,3-5seconds.
 - Product Number Code: LED-1P/2P/3P/-A



1P

2P

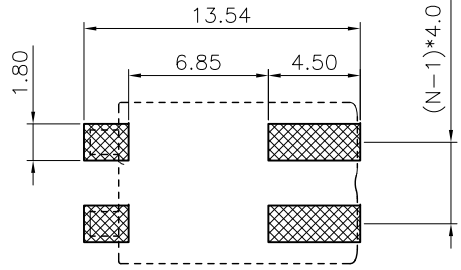
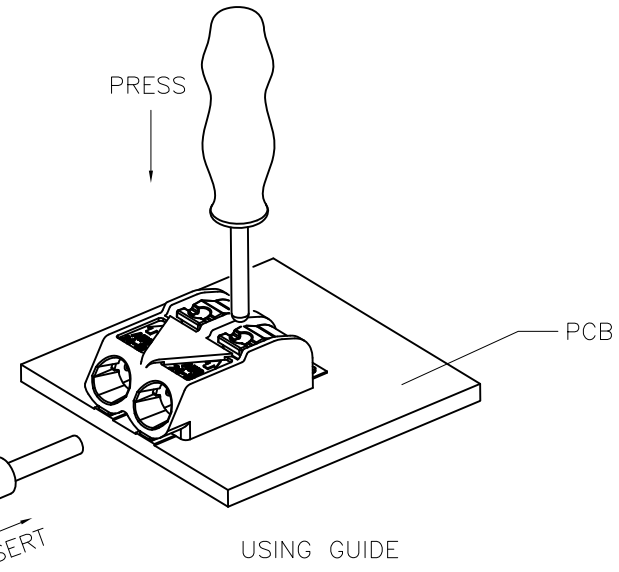
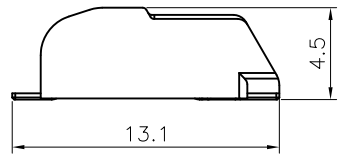
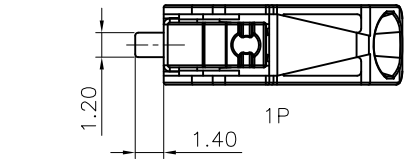
3P



1P

2P

3P



RECOMMEND PCB LAYOUT
TOLERANCE=±0.05mm

GENERAL TOLERANCE		ANGLE TOLERANCE		PROJECTION		TITLE	4.00mm LED Series Terminal Block SMT Type	
X.	±0.60	X.	±5°	UNITS	mm			
.X	±0.38	.X	±3°	SHEET SIZE	A4	SERIES		
.XX	±0.25	.XX	±2°					
DRAWING TYPE		CUSTOMER						
SCALE		1:1	SHEET	1 OF 1				
DRAWING NO.								