



## SPECIFICATION FOR APPROVAL

**CUSTOMER:** 寧波閃諾

**EVERCOOL MODEL NO:** EC12025M12SA

**CUSTOMER MODEL NO:** EC12025M12SA

**DESCRIPTION:** DC12V FAN

<b>APPROVED BY (AUTHORISED)</b>	<b>APPROVED</b>
	<b>Alex</b>
	<b>CHECKED</b>
	<b>Xiongwei</b>
	<b>DRAWN</b>
	<b>Chenjie</b>
	<b>SALES</b>
	<b>Serene</b>

\* Please confirm your acceptance by return fax or mail.

SPEC NO	ISSUE DATE	EDITION	REVISED DATE
20260409A07	2026/4/9	A0	2026/4/9

THE PRODUCTION ACCORD WITH EUROPE UNION ROHS STANDARD

**EVERCOOL THERMAL CO., LTD**

**NO. 123-8, HSING DE RD., SAN-CHUNG CITY,**

**TAIPEI HSIEN, TAIWAN, R.O.C.**

**TEL: 886-2-8512-2889 FAX: 886-2-8512-2890**

**[URL:www.evercool.com.tw](http://www.evercool.com.tw)**

**[EMAIL: coolest@ms14.hinet.net](mailto:coolest@ms14.hinet.net)**

# I. GENERAL SPECIFICATION

Item	EC12025M12SA			
1.Part NO.	120*120*25			
2.Outline Dimension	12	VDC		
3.Rated Voltage	7	VDC		
4.Starting Voltage	7	VDC~	12	VDC
5.Operating Voltage Range	0.4	A		
6.Rated Current*	4.8	W		
7.Rated Power Consumption*	2300	RPM ± 15%		
8.Rated Speed*	84.98	CFM(ft3/min)		
9.Max. Airflow**	0.24	In-H2O		
10.Max. Static Pressure**	<41	dB(A)		
11.Noise Level***	50000	hrs at 25°C		
12.Life Expectancy	4	Poles		
13.No of Polarity	Counter-Clockwise			
14.Direction of Rotation	Counter-Clockwise			

**Noted:**

**\*Input Current Speed Power Consumption**

Measured after continuous 30 minutes operation at rated voltage in free air at ambient temperature of 25 °C, 65% relative humidity

**\*\*Performance**

Measured with use of double chamber. The value are recorded when the fan speed is stabilized at rated voltage.

**\*\*\*Noise Level**

Measured at rated voltage in a semi-anechoic chamber with background noise below than 20 dB(A). The measuring distance is in one meter from microphone to inlet of the fan.

## II. ELECTRICAL SPECIFICATION

Item		Specification
1.Polarity Protection	✓YES	Be capable of endurance when Vcc & GRD are exchanged
	NO	
2.Auto restart	YES	Locked motor protection
	✓NO	
3.Insulation Resistance		10MΩ/b/w unshielded wire and frame at 500 VDC/min
4.Dielectric Strength		5Ma Max./Measured b/w lead wire and frame at 500VAC/min

## III. MAIN MATERIALS / PARTS SPECIFICATION

Item		Specification				
1.Materials of Frame		Thermoplastic PBT of UL 94V-0(BK)				
2.Materials of Fan Blade						
3.Bobbin						
4.Bearing		Dual ball bearing				
		1 ball & 1 sleeve bearing				
	✓	Sleeve bearing				
		EL bearing				
5.Lead wire	✓	Red (+)	UL#	1007	26	AWG
	✓	Black (-)	UL#	1007	26	AWG
	✓	Yellow(FG)	UL#	1007	26	AWG
				---		
6.Connector		2510-3P				

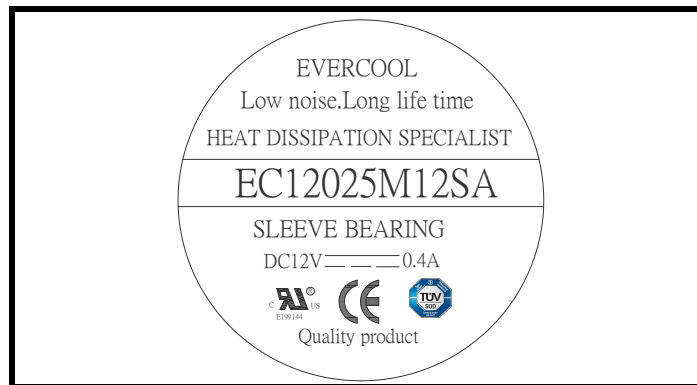
## IV. ENVIRONMENT SPECIFICATION

Item	Specification
1.Operation Temperature	-10℃~+70℃/66%(RH), high / low temperature test for 24 hours, temperature change: 30℃/hours.
2.Storage Temperature	-40℃~+70℃/66%(RH), high / low temperature test for 24 hours, temperature change: 30℃/hours.

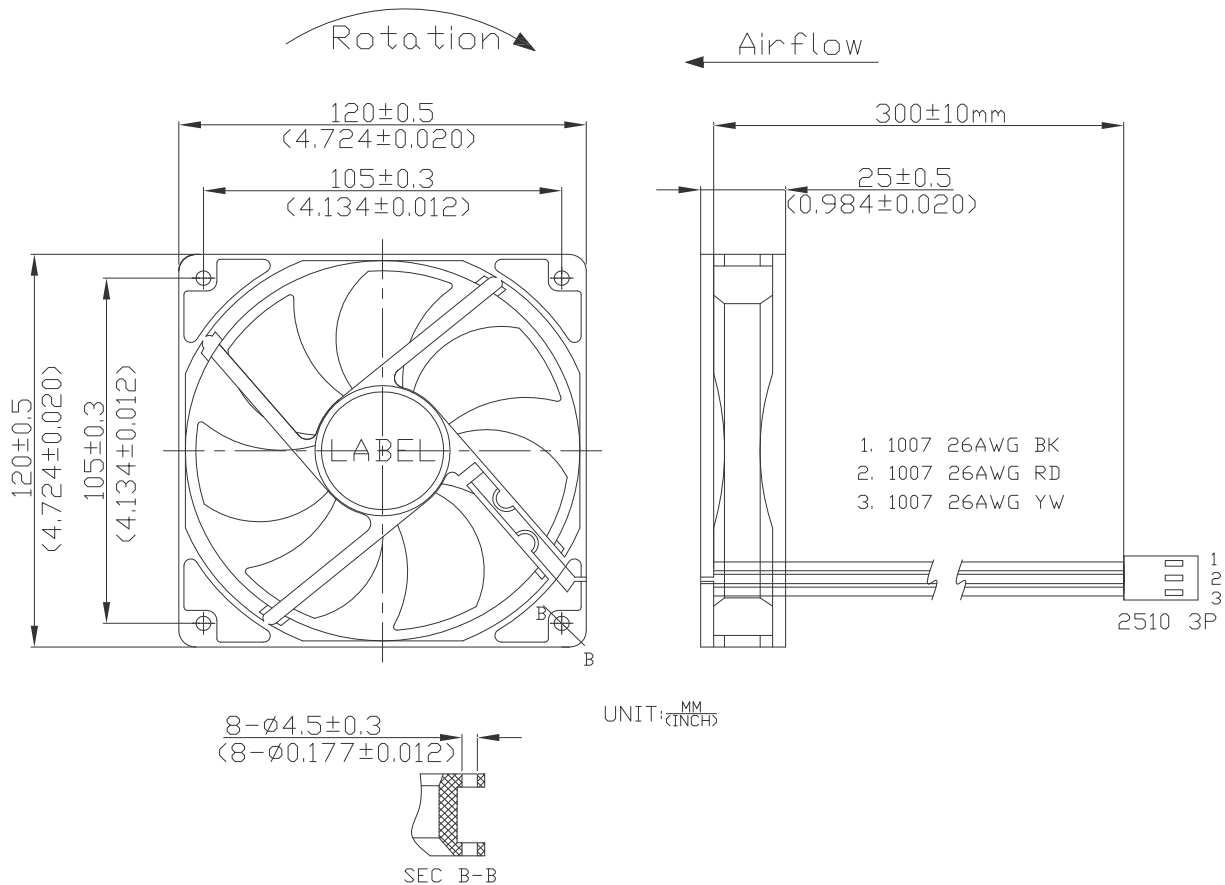
## V. DROPPING TEST

Prepared in minimum packing condition, fan will withstand one drop each on three surfaces from 30 cm height onto a 10mm thick hard wooden board.

## VI. LABEL MARKING

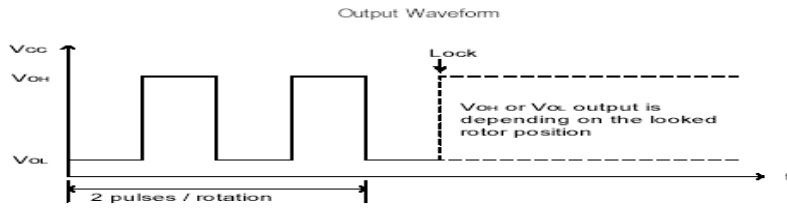
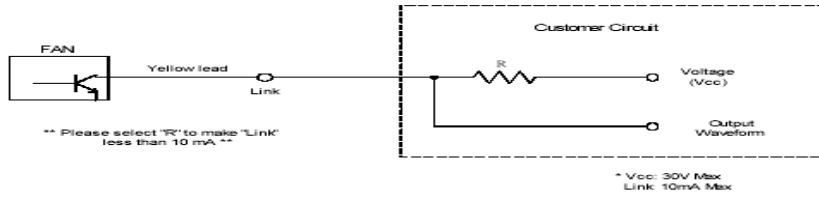


## VII. OUTLINE DIMENSION

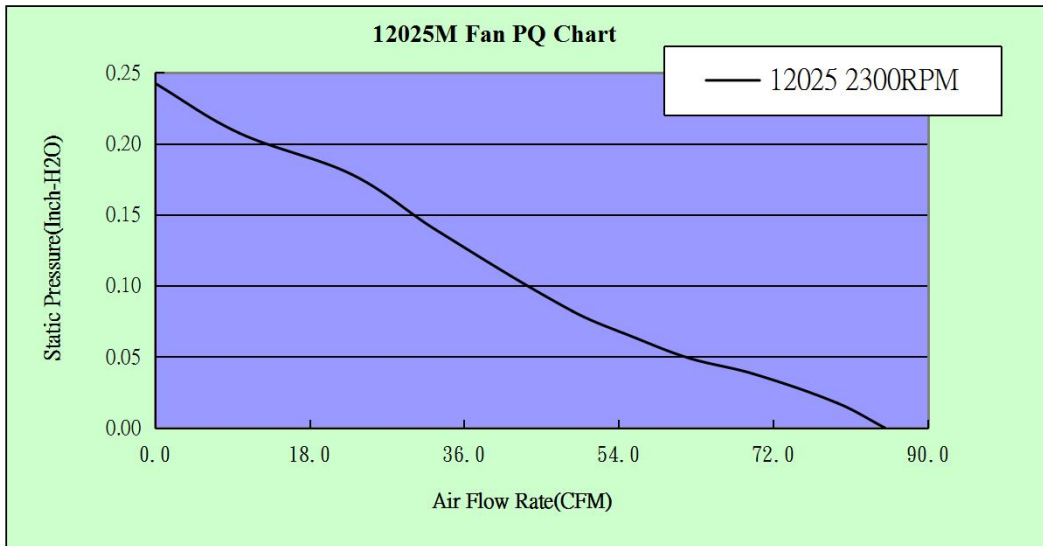


# VIII. Sensor Circuit System

Speed Sensor / Tachometer ( FG/F )



# IX. P/Q Performance



	Q(cfm)	Ps(InchH2o)
1	0.000	0.242
2	9.797	0.207
3	22.908	0.178
4	32.709	0.139
5	48.636	0.082
6	55.964	0.063
7	62.260	0.049
8	69.627	0.038
9	79.467	0.017