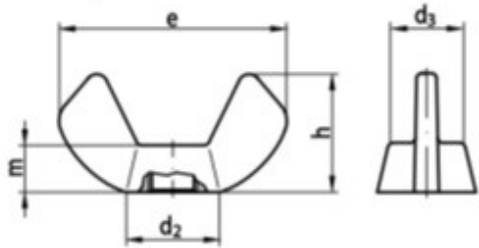


## DIN 315

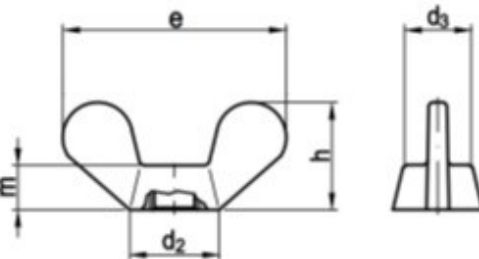
### Гайка барашковая

Американский тип



Размеры	M3	M4	M5	M6	M8	M10	M12	M14	M16	M18	M20
e	18.5	18.5	22	26.8	30.3	35.3	47.5	65	65	66.5	66.5
h	8.8	8.8	10.5	12.9	14.8	17.3	22.5	30.8	30.8	31.2	31.2
m	3	3	4	4.9	5.4	6.3	7.9	10.6	10.6	12.2	12.2
d <sub>2</sub>	7.8	7.8	9.5	11.9	13.5	15.3	20.5	25	25	29.3	29.3

Немецкий тип



Размеры	M3	M4	M5	M6	M8	M10	M12	M14	M16	M20	M24
e <sub>max.</sub>	19	20	26	33	39	51	65	63.5	73	90	110
h <sub>max.</sub>	9.5	10.5	13	17	20	25	33.5	32.3	37.5	46.5	56.5
m <sub>max.</sub>	3.9	4.6	6.5	8	10	12	14	12	17	21	25
d <sub>2 max.</sub>	7	8	11	13	16	20	23	21.5	29	35	44
d <sub>3 max.</sub>	6	7	9	11	12.5	16.5	19.5	-	23	29	37.5